



ISO 13485



*Committed to Excellence*



### Northern Meditec Limited

ADD: 4th Floor, Building C, Jin Wei Yuan Industrial Park, Julongshan Area, Kengzi St, Pingshan District, Shenzhen, P. R. China

TEL: +86 18682318839 (whatsapp/skype) FAX: +86 755 86528647

EMAIL: karenzhang@northernmeditec.com WEBSITE: www.northernmeditec.com

## PRODUCT CATALOGUE

## About Northern



Northern meditec limited is a professional manufacturer of high-end medical equipment. Since established, Northern has been keeping the value of committed to excellence, to R&D and manufacture the best medical devices such as patient monitor, anesthesia machine, ventilator, infant radiant warmer incubator, etc.



## Company



## Reception



## Office



Anesthesia Patient Monitor  
**Gemini**

Unique Design



Features

- 15.6"/19" switchable TFT LCD touch screen, wide and flat design
- Full-touch screen control, no physical buttons at front panel
- Aluminum material shell with effective heat dissipation capability
- Fanless design allows for quiet care environment
- Anti-motion and low perfusion SPO2 measurement
- Built-in rechargeable battery



Multiple-parameter options & Flexible screen size options

Critical Care Patient Monitor  
**Venus**



Features

- 15.6" TFT LCD Touch screen, wide and flat design
- ST and Arrhythmia analysis
- Big font, ECG 7-lead half-screen, ECG 7-lead full screen, ECG 12-lead full screen, OxyCRG, DynaTrend Multi-interface display
- 10 waveform display, up to 12-lead ECG analysis
- Powerful calculation (MEWS, Hemodynamic, Dose, Oxygenation, Ventilation, Renal function)
- Anti-motion and low perfusion SPO2 measurement

Up to 10 waveforms display



Optional plug-in module (plug and play)



Various external ports



15.6" TFT touch screen with big knob

## PATIENT MONITORING

### 12.1" Multi-para Patient Monitor Taurus / Pisces / Virgo



#### Features

- 12.1" TFT LCD screen, wide and flat design
- Big font, ECG 7-lead half-screen, ECG 7-lead full screen, ECG 12-lead full screen, OxyCRG, DynaTrend Multi-interface display
- 8 waveform display, up to 12-lead ECG analysis
- Anti-motion and low perfusion SPO2 measurement
- Built-in rechargeable battery

#### Bull horn design handle



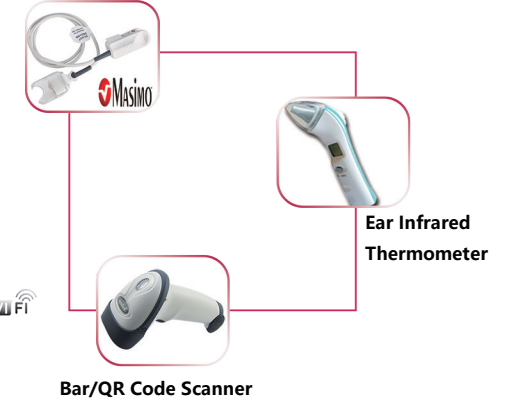
#### Optional plug-in module (plug and play)



### Vital Sign Monitor Aquarius



#### Masimo SET® SpO2



#### Features

- 8.4" TFT color LCD, touch screen is optional
- Up to 6 parameters or 3 waveforms display
- Optional Ear/Forehead Infrared Thermometer, QR Code Scanner, Thermal Recorder
- Powerful calculation (MEWS, Hemodynamic, Dose, Oxygenation, Ventilation, Renal function)
- Anti-motion and low perfusion SPO2 measurement
- Built-in rechargeable battery (5 hours uninterruptable working time, can upgrade to 15 hours)



Portable Design



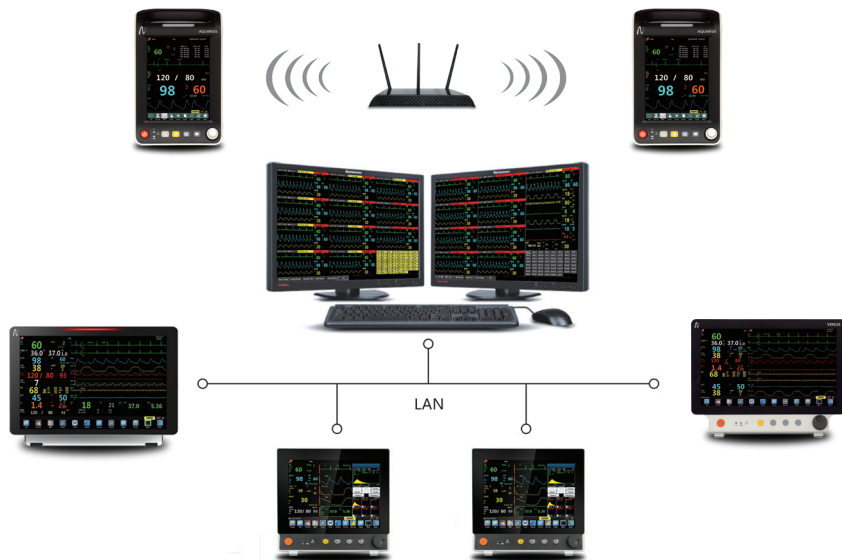
Touch Screen (Optional)



Emergency bag (Optional)

## PATIENT MONITORING

### Central Monitoring System CMS



#### Features

- Networked data management of all Northern brand monitors
- Dual-screen display monitoring
- Connection via LAN/WLAN up to 64 bedside monitors
- Support WIFI/3G/4G connection, Cloud servers



## VETERINARY

### Veterinary Monitor Taurus Vet / Aquarius Vet



Taurus Vet (12.1")



Aquarius Vet(8,4")

#### Features

- Suitable for feline, canine and other animals
- Multi-selectable user screen options
- Graphical & tabular trend review(120 hours)
- Built-in rechargeable battery
- Big font and color font display setting
- Spot-check and continuous monitoring mode
- Thermal recorder support



## Fully electronic Anesthesia machine Atlas N7

### Fully Electronic Control and Display



15.6" Touch screen



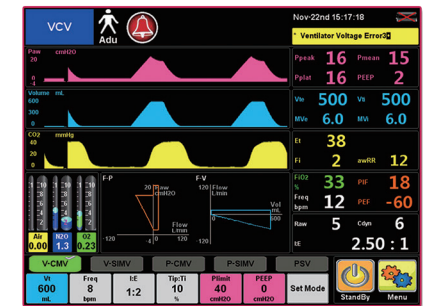
Auto FiO<sub>2</sub>



### Features

- 15.6" TFT touch screen, integrated patient monitor design(optional)
- Tidal volume:10ml-1500ml
- All ventilation modes to satisfy neonate, pediatric and adult patients
- Upto 4 waveforms display, 3 loops diagram
- User friendly design interface, easy to operate
- Double touch screen, special and simple-operatinon screen layout
- Human engineering design, rotatable supporting arm with adjustable angle.
- Full-electronic control and electronic flow meter, precise control and accurate data monitoring
- Autocalvable Metallic material of breathing system
- Integrated breathing circuit with built-in heater

## Semi-electronic Anesthesia Machine Atlas N5



12.1" Touch screen

### Features

- 12.1" TFT touch screen
- All ventilation modes to satisfy neonate, pediatric and adult patient
- User friendly design interface
- Mechanical control mixer, electronic flowmeter
- Autocalvable Metallic material of breathing system
- Integrated breathing circuit with built-in heater



Plug-in module



AGSS



Auxiliary Outlet

# ANESTHESIA MACHINE

## Anesthesia Machine Atlas N3



8.4" Screen display



Selectable Upward/ downward bellows system

### Features

- 8.4" TFT screen
- All ventilation modes to satisfy neonate, pediatric and adult patients
- User friendly design interface
- 6 flow tubes for 3 gases
- Integrated breathing circuit with built-in heater
- Autocalvable Metallic material of breathing system
- Fresh gas, compliance and leakage compensation
- Monitor available on top cover(Optional)



ACGO



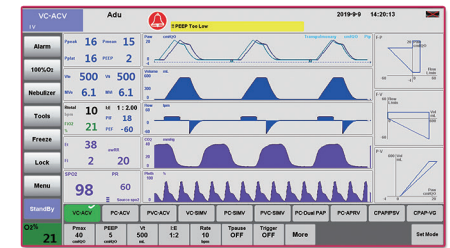
Suction device



AGSS

# VENTILATOR

## ICU Ventilator Crius V6



15.6" Touch screen display

### Display

- Display size: 15.6" TFT touch screen
- Display type: Active matrix color TFT LCD
- Resolution: SVGA 1366 x 768

### Scientific design ensures safety

- Convenient lock screen function avoid the possibility of misoperation
- The breathing valve can be disassembled and disinfected to avoid the occurrence of cross-infection in the hospital.
- Flexible triggering and switching modes, fully improve man-machine synchronization, provide good ventilation for patients, feel comfortable breathing.
- Optional SPO2 and EtCO2.

### Controls

- Fully electronic control
- Ventilation type: Blower(turbine drive)
- Patient type: Adult/Pediatric/Neonate
- Patient height and weight adjustable.

