

# Autoclave

## Super Deluxe Series

The Series represents Sturdy's all purpose, top-of-line tabletop autoclave with versatility and flexibility to meet almost any situation that arises. This model uses an LCD panel along with 3 navigation buttons (up/down/return), which allow you to configure almost everything using the screen - this minimizes the buttons on the panel and allows the series more flexibility and functionality.



# Autoclave

## Super Deluxe Series

### Features

- Class B
- LCD panel
- Pre & post vacuum
- Prion program
- Leakage, Helix, B.D. test program
- Customization program
- Data recorder (SD card) and printer
- Tank can be filled manually or piped-in (filtered water)
- Overheat protection
- Process evaluation system
- Pressure auto door lock
- Emergency stop button
- Pressure overload protection
- Double water tanks (Only for SA-300MB/302MB)
- Chamber volume: 24 L / 40L /50L



# Autoclave

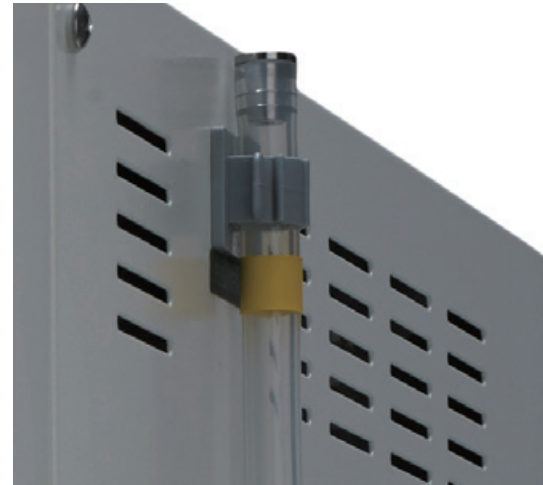
## Super Deluxe Series

SA-260MB External View

**A** Pressure Gauge



**B** The yellow mark is full water level.



**C** Printer



**D** Easy Door Knob



# Autoclave

## Super Deluxe Series

SA-300MB/SA-302MB External View

A Pressure Gauge



B Door Latch



C Printer



Reliable Sterilization Partner

# Super Deluxe Series

SA-260MB / 300MB / 302MB Control Panel

**Up Button:**  
Used for setting and changing the function and increasing the parameters.

**Unlock Button:**  
Press this button to release the lock status after completing a sterilization cycle or un-executing program.

**Printer Button:**  
Print the prompt message of each sterilization steps automatically or re-print the last sterilization steps.

**SD Slot:**  
To accept a formatted SD card for storing the process information of a sterilization cycle by text format (\*.dat).



**LCD Panel:**  
Display the information of sterilization status.

**Enter Button:**  
Press this button to execute or confirm the input data.

**Down Button:**  
Used for setting and changing the function and decreasing the parameters.

**Cancel Button:**  
To abort the changing operation and return to previous step.

**Emergency Stop Button:**  
Stop program and release pressure/vacuum.

# Autoclave

## Super Deluxe Series

### Certifications

Sturdy is manufactured in compliance with the following directives and standards:

- 93/42/EEC, Class IIB (European Directive for Medical Devices)
- 2014/68/EU (Pressure Equipment Directive)
- EN 285 (Large Steam Sterilizers),
- EN 13060 (Small Steam Sterilizers)
- EN 61010-1/-2-040 (Safety Requirements for Electrical Equipment for Measurement Control And Laboratory Use – Part 1 and Part 2)
- EN 61326-1 (Electrical Equipment for Measurement Control And Laboratory Use – EMC Requirements – Part 1: General Requirements)
- ISO 13485 (Quality Management/Certification)

# Autoclave

## Super Deluxe Series

### Specifications

| SPEC/Model NO.                       | SA-260MB        | SA-300MB        | SA-302MB        |
|--------------------------------------|-----------------|-----------------|-----------------|
| Chamber Capacity (L)                 | 24              | 40              | 50              |
| Chamber Size<br>Diam x Depth (mm)    | 260 X 450       | 300 X 570       | 300 X 710       |
| Overall Dimensions<br>W x H x D (mm) | 533 X 442 X 655 | 620 X 489 X 766 | 620 X 489 X 906 |
| Voltage (V)                          | 230             | 230             | 230             |
| Current(A) / Power(W)                | 12A / 2770W     | 14A / 3226W     | 14A / 3226W     |
| Heater (W)                           | 1800            | 2300            | 2300            |
| Dry Heater (W)                       | 870             | 826             | 826             |
| Net Weight (Kg)                      | 57              | 87              | 92              |
| Water Fill*                          | Tank/Piped      | Tank/Piped      | Tank/Piped      |
| Type                                 | Tabletop        | Tabletop        | Tabletop        |
| Water Tank<br>Capacity (cc)          | 4200            | 4200 / 8400     | 4200 / 8400     |
| Water Consumption<br>per cycle (cc)  | 1270            | 700 / 1500      | 700 / 1500      |

\* "Tank" - Internal Water Tank with auto-chamber-fill, "Piped" - uses local water plumbing with auto-fill.

| SPEC/Model NO.                        | SA-260MB              | SA-300MB              | SA-302MB              |
|---------------------------------------|-----------------------|-----------------------|-----------------------|
| Temperature Options ( °C)             | 121 or 134<br>105-135 | 121 or 134<br>105-135 | 121 or 134<br>105-135 |
| Prion                                 | S                     | S                     | S                     |
| Bowie Dick Test                       | S                     | S                     | S                     |
| Pump Test                             | S                     | S                     | S                     |
| Sterilization Timer                   | 0-60 min.             | 0-60 min.             | 0-60 min.             |
| Dry Timer                             | 0-60 min.             | 0-60 min.             | 0-60 min.             |
| Redry                                 | S                     | S                     | S                     |
| Data Recorder                         | S                     | S                     | S                     |
| Printer                               | S                     | S                     | S                     |
| Liquid                                | 0                     | 0                     | 0                     |
| Temperature Indicator                 | LCD                   | LCD                   | LCD                   |
| Pressure Indicator                    | Gauge / LCD Display   | Gauge / LCD Display   | Gauge / LCD Display   |
| Progress Indicator<br>(bar or lights) | S                     | S                     | S                     |
| Power Indicator                       | S                     | S                     | S                     |
| Pressure Auto Lock                    | S                     | S                     | S                     |
| Door Closed Indicator                 | S                     | S                     | S                     |
| Low Water Indicator                   | S                     | S                     | S                     |
| Reset                                 | S                     | S                     | S                     |
| Program Selector                      | S                     | S                     | S                     |
| Error Indicator                       | S                     | S                     | S                     |
| Pre-Vacuum                            | S                     | S                     | S                     |
| Post Dry Vacuum                       | S                     | S                     | S                     |

Note: "S" - Standard configuration. "0" - Optional configuration.