



C10UC

Wireless Cardiac Ultrasonic

www.thaimedicaltrading.co.th



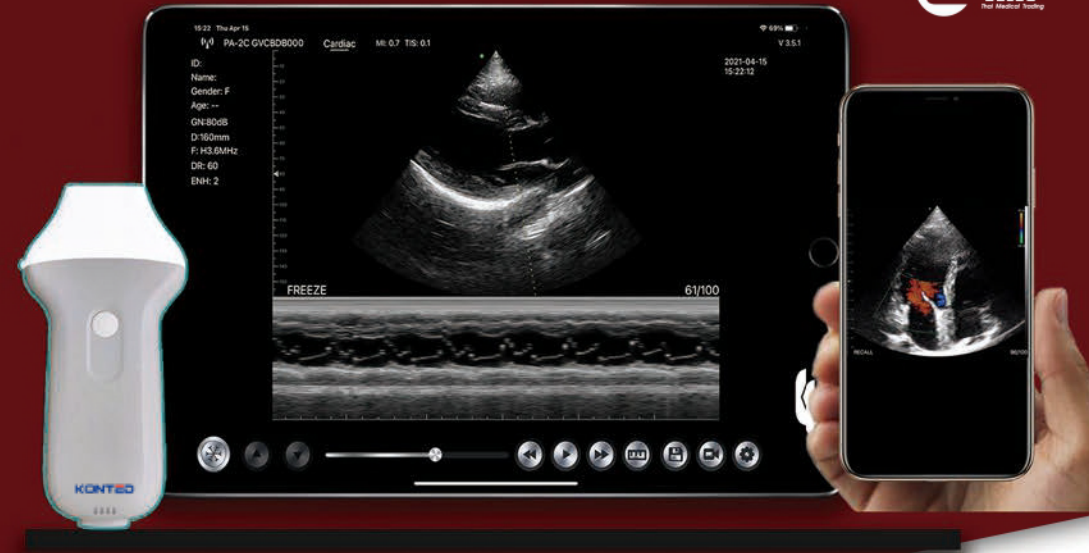
Care for heart health with one probe

Phased array probe

Frequency: 2.2/3.6MHz

Depth: 90-190mm

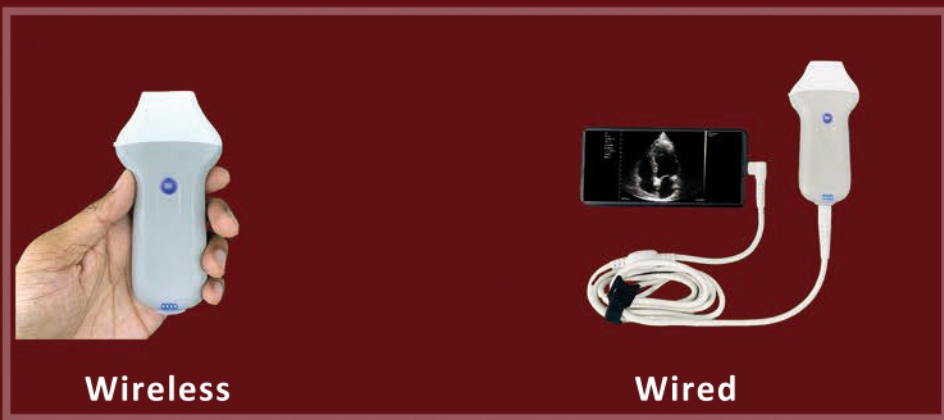
N.W: 116g



Advantages

- Can be connected to **IOS/Android/Windows** devices by WiFi or Type-C cable.
- Smaller design, convenient for sterilization in the operating field.
- Save more time and costs for doctors and patients
- Built-in WiFi and Lithium Battery support wireless charging

USB&WiFi TWO CHOICES



Items List for C10UC Scanner

- Standard Accessories:
- Wireless Ultrasound Probe*1
 - USB A male to Type-C Female adapter
 - Portable Wireless Charger*1
 - USB Cable for Charging*1
 - Operators' Manual*1
 - Type-C cable*1

- Optional:
- ipad Trolley



Scanning mode: Electronic phased array
Probe element: 128
Probe scan frequency/depth:
 Phased probe: 2.2/3.6Mhz, 90/130/160/190mm
Display mode:
 B, B/M, Color, PW, PDI
Applications:
 Cardiac, Abdomen
Measure:
 B: Length,Area/Circumference,Angle,Trace,Distance
 B+M: Heart Rate, Time, LVIDd, LVIDs, SV, EF, Distance
 B+PW:Velocity, Heart Rate(2), S/D, Depth

Image frame rate: 24/s
 Cineplay: 100/200/500/1000
 Image save: jpg, avi, Mp4 and DICOM format
 Wifi type: 802.11g/20MHz/5G/450Mbps

Working system: Apple iOS and Android, Windows
Language: English,Russian,Italian,Spanish,Chinese, Portuguese(Brazil)
Battery: built-in 2800mAh Lithium battery
 Power: consumption 4W (probe run) /1.5W (probe stop)
 Battery last: 3 hours(working time), More than 5 hours(stand by time)
 Battery charge: by USB cable / wireless charge
 Dimension: 127×61×21mm
 Weight: 116g