

Autoclave

SAP Series

SAP are automatic pressure control autoclaves. Its advantage lies in its product line diversity and flexible options to make the right match and perfect fit for your organization.



Autoclave

SAP Series

Features

SAP Series

- Independent steam generator
- Cycle progress indicator light
- Easily accessible emergency stop button
- Special liquid program
- Emergency button
- Cylindrical chamber volume: 100, 143, 196, 350 (L)
- Square Chamber volume: 110, 260, 454, 680, 848 (L)



Autoclave

SAP Series

SAP Series External View : Loading door

SAP

A Temperature gauge of chamber



B Door handle



C It can change into square door.



Reliable Sterilization Partner

STURDY
APEX GROUP

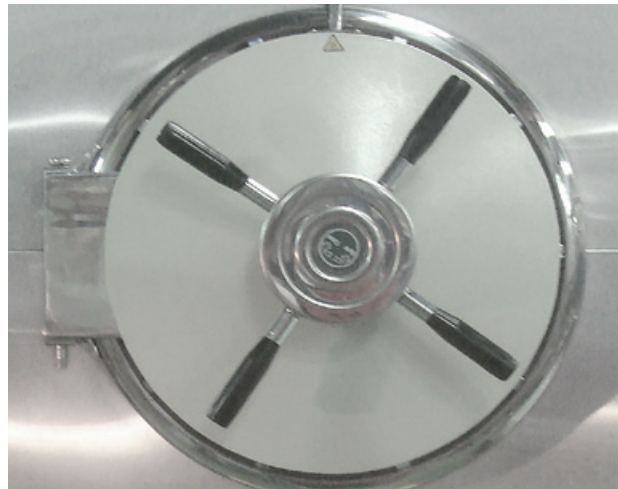
Autoclave

SAP Series

SAP Series External View : Unloading door

SAP SERIES WITH DOUBLE DOOR- SAP-400D/450D /500D /600D
SAP-S0110D/S0260D/S0454D/S0680D/S0848D

A Door handle



B It can change into square door.



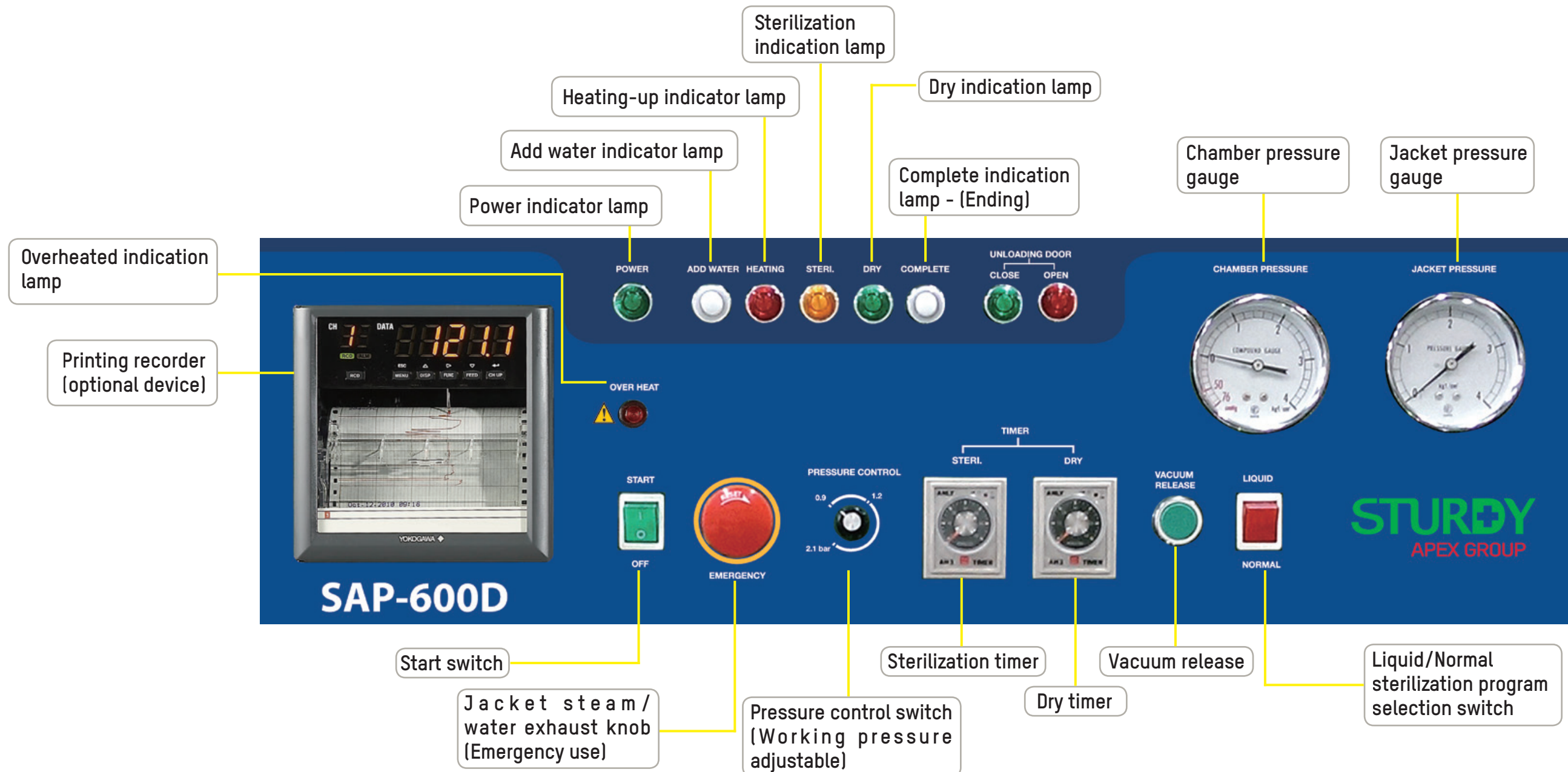
Control Panel

A

Autoclave

SAP Series

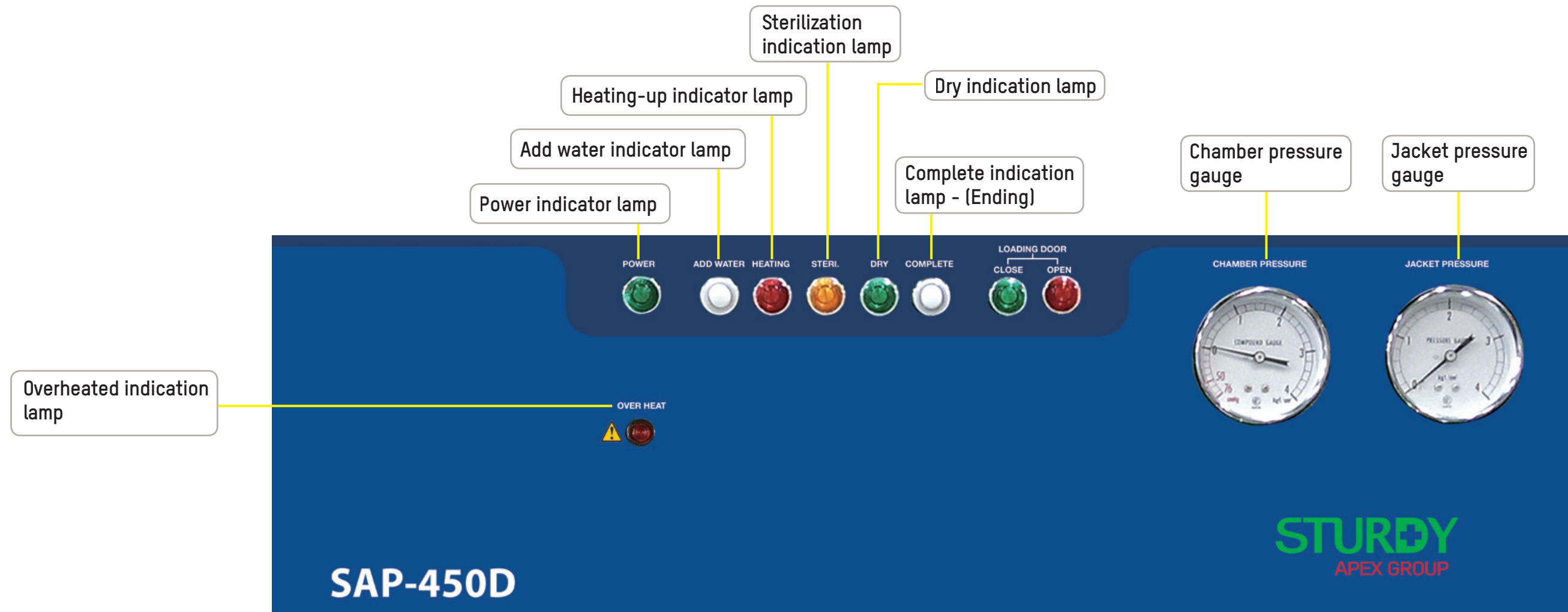
SAP Series Control Panel : Loading door



Autoclave

SAP Series

SAP Series Control Panel : Unloading door



Autoclave

SAP Series

Certifications

Sturdy is manufactured in compliance with the following directives and standards:

- 93/42/EEC
- Class IIB (European Directive for Medical Devices)
- 2014/68/EU (Pressure Equipment Directive)
- EN 285 (Large Steam Sterilizers),
- EN 13060 (Small Steam Sterilizers)
- EN 61010-1/-2-040 (Safety Requirements for Electrical Equipment for Measurement Control And Laboratory Use – Part 1 and Part 2)
- EN 61326-1 (Electrical Equipment for Measurement Control And Laboratory Use – EMC Requirements – Part 1: General Requirements)
- ISO 13485 (Quality Management/Certification)

SAP Series

SAP Series Specifications

Autoclave

| SPEC/Model NO. | SAP-400 | SAP-450 | SAP-500 | SAP-600 | SAP-S0110 | SAP-S0260 | SAP-S0454 | SAP-S0680 | SAP-S0848 | |
|--------------------------------------|-------------------------|---------------|---------------|---------------|-----------------|------------------|------------------|------------------|------------------|--|
| Chamber Capacity (L) | 100 | 143 | 196 | 350 | 110 | 260 | 454 | 680 | 848 | |
| Chamber Size Diam x Depth (mm) | 400 x 800 | 450 x 900 | 500 x 1000 | 610 x 1200 | 410 x 410 x 660 | 510 x 510 x 1000 | 610 x 610 x 1220 | 610 x 915 x 1220 | 610 x 915 x 1520 | |
| Overall Dimensions W x H x D (mm) | 800x1800x1150 | 800x1800x1250 | 800x1800x1350 | 900x1800x1550 | 950x1800x1350 | 950x1800x1450 | 1050x1800x1650 | 1740x2060x1960 | 1740x2100x2300 | |
| Voltage (V) | 230/380(Mono/Tri phase) | | | | | | | | | |
| Heater (KW) | 7 | 9 | 12 | 9 | 12 | 15 x 2 | 15 x 2 | 16 x 2 | | |
| Water Fill * | | | | | Piped | | | | | |
| Chamber Type | Cylindrical | | | | Square | | | | | |
| Pressure Option (bar) | | | | | 0.9-2.1 | | | | | |
| Selectable Sterilization Timer | | | | | 0-60 min. | | | | | |
| Selectable Dry Timer | | | | | 0-60 min. | | | | | |
| Digital Printer | | | | | N/A | | | | | |
| 6-Point Temp Sensor Recorder | | | | | 0 | | | | | |
| 1-Point Temp Sensor Recorder | | | | | 0 | | | | | |
| Liquid | | | | | S | | | | | |

* "Piped" - uses local water plumbing with auto-fill.

SAP Series

Autoclave

SAP Series (With Double Door) Specifications

| SPEC/Model NO. | SAP-400D | SAP-450D | SAP-500D | SAP-600D | SAP-S0110D | SAP-S0260D | SAP-S0454D | SAP-S0680D | SAP-S0848D | |
|--------------------------------------|-------------------------|---------------|---------------|---------------|-----------------|------------------|------------------|------------------|------------------|--|
| Chamber Capacity (L) | 100 | 143 | 196 | 350 | 110 | 260 | 454 | 680 | 848 | |
| Chamber Size Diam x Depth (mm) | 400 x 800 | 450 x 900 | 500 x 1000 | 610 x 1200 | 410 x 410 x 660 | 510 x 510 x 1000 | 610 x 610 x 1220 | 610 x 915 x 1220 | 610 x 915 x 1520 | |
| Overall Dimensions W x H x D (mm) | 800x1700x1200 | 800x1700x1300 | 800x1700x1350 | 900x1800x1540 | 850x1710x1110 | 1025x1795x1480 | 1170x1850x1800 | 1740x2073x1810 | 1740x2073x2130 | |
| Voltage (V) | 230/380(Mono/Tri phase) | | | | | | | | | |
| Heater (KW) | 7 | 9 | 12 | 9 | 12 | 15 x 2 | 15 x 2 | 16 x 2 | | |
| Water Fill * | | | | | Piped | | | | | |
| Chamber Type | Cylindrical | | | | Square | | | | | |
| Pressure Option (bar) | | | | | 0.9-2.1 | | | | | |
| Selectable Sterilization Timer | | | | | 0-60 min. | | | | | |
| Selectable Dry Timer | | | | | 0-60 min. | | | | | |
| Digital Printer | | | | | N/A | | | | | |
| 6-Point Temp Sensor Recorder | | | | | 0 | | | | | |
| 1-Point Temp Sensor Recorder | | | | | 0 | | | | | |
| Liquid | | | | | S | | | | | |

* "Piped" - uses local water plumbing with auto-fill.

Autoclave

SAP Series

SAP Series Specifications

| SPEC/Model NO. | SAP-400 | SAP-450 | SAP-500 | SAP-600 | SAP-S0110 | SAP-S0260 | SAP-S0454 | SAP-S0680 | SAP-S0848 |
|---------------------------------------|---------|---------|---------|---------|-----------|-----------|-----------|-----------|-----------|
| Temperature Indicator | | | | | Gauge | | | | |
| Pressure Indicator * ² | | | | | Gauge | | | | |
| Progress Indicator (bar or lights) | | | | | S | | | | |
| Power Indicator | | | | | S | | | | |
| Pressure Auto Lock | | | | | 0 | | | | |
| Reset | | | | | S | | | | |
| Standby * ³ | | | | | N/A | | | | |
| Program Selector | | | | | S | | | | |
| Pre-Vacuum | | | | | N/A | | | | |
| Post Dry Vacuum | | | | | 0 | | | | |
| Water Pump | | | | | 0 | | | | |

Note: "S" - Standard configuration. "0" - Optional configuration.

*² "Gauge" - Includes both Jacket and Chamber pressure gauges.

*³ "Standby" - Allows the Big Autoclave to maintain jacket temperatures between sterilization sessions.

Other notes:

- Standard Chamber / Jacket / Door / Housing are made of Stainless Steel#304. #316 Stainless steel optionally available for Chamber / Jacket / Door.
- Heater material is Stainless Steel #316.
- Standard Accessories: Tray*1, Glass Viewer Tube * 2
- Optional Accessories: Trolley / Plate Set / Basket
- Sturdy also offers customized sizes up to 2000 L.

Reliable Sterilization Partner

Autoclave

SAP Series

SAP Series (With Double Door) Specifications

| SPEC/Model NO. | SAP-400D | SAP-450D | SAP-500D | SAP-600D | SAP-S0110D | SAP-S0260D | SAP-S0454D | SAP-S0680D | SAP-S0848D |
|---------------------------------------|----------|----------|----------|----------|------------|------------|------------|------------|------------|
| Temperature Indicator | | | | | Gauge | | | | |
| Pressure Indicator * ² | | | | | Gauge | | | | |
| Progress Indicator (bar or lights) | | | | | S | | | | |
| Power Indicator | | | | | S | | | | |
| Pressure Auto Lock | | | | | 0 | | | | |
| Reset | | | | | S | | | | |
| Standby * ³ | | | | | N/A | | | | |
| Program Selector | | | | | S | | | | |
| Pre-Vacuum | | | | | N/A | | | | |
| Post Dry Vacuum | | | | | 0 | | | | |
| Water Pump | | | | | 0 | | | | |

Note: "S" - Standard configuration. "0" - Optional configuration.

*² "Gauge" - Includes both Jacket and Chamber pressure gauges.

*³ "Standby" - Allows the Big Autoclave to maintain jacket temperatures between sterilization sessions.

Other notes:

- Standard Chamber / Jacket / Door / Housing are made of Stainless Steel#304. #316 Stainless steel optionally available for Chamber / Jacket / Door.
- Heater material is Stainless Steel #316.
- Standard Accessories: Tray*1, Glass Viewer Tube * 2
- Optional Accessories: Trolley / Plate Set / Basket
- Sturdy also offers customized sizes up to 2000 L.

Reliable Sterilization Partner

Autoclave

SAT Series

Comparison Table - Floor Stand Series Feature Comparison

| Model NO. | HP | SAT | SAP | Pointer-Auto | Pointer-Manual |
|---|---------------------------|--------------|--|---------------------------------|----------------|
| Control System | Digital Temp. PLC Control | | Mechanical Pressure Control Optional: (T) for Digital Temp. Control | Mechanical Pressure Control | |
| Program for selection Wrapped/Unwrapped/Liquid | Yes | | | N/A | |
| Air Removal | Vacuum Pump | | Gravity | | |
| Pre-Vacuum Function | Yes | | N/A | | |
| Post(Dry)-Vacuum Function | Yes | | Optional (V) | | N/A |
| Dry function | Yes (Auto) | | | Yes (Manual) | |
| Printer & USB storage | Yes | N/A | | | |
| 1-point temp. recorder | N/A | Yes | Optional (X) | N/A | |
| 6-point temp. recorder | N/A | Optional (Y) | | N/A | |
| Double Door | Optional (D) | | | N/A | |
| Fill water system* (Water pressure 2 bar required) | Auto | | | Manual Optional (B) for auto | Manual |
| Chamber/Jacket Pressure display | Gauge / LCD Display | | Gauge | | |
| Stand-by Switch | Yes | | N/A | | |
| Emergency/Reset Switch | Yes | | | N/A | |
| Add-Water Pump | Optional (W) | | | Optional (BW) | N/A |
| Water level Protection | Yes | | | Optional (L) | |
| Pressure door auto-lock | Yes | | Optional (K) | | |

Option Codes (e.g. Optional (V)) listed in the table above are only reference codes used by other documentation.

Autoclave

SAT Series

Optional Codes

Option Codes (e.g. Optional (V)) listed in the table above are only reference codes used by other documentation.

B: AUTO-ADD WATER PLUMBING (WATER PRESSURE OF 2 BARS REQUIRED)

D: DOUBLE DOOR DEVICE

K: PRESSURE DOOR AUTO-LOCK DEVICE

L: WATER LEVEL CONTROLLER (LOW WATER INDICATOR)

T: DIGITAL DISPLAYED TEMP. CONTROLLER

V: DRY VACUUM PUMP

W: ADD WATER PUMP

X: 1-POINT TEMP. RECORDER

Y: 6-POINT TEMP. RECORDER

Autoclave

SAP Series

Accessories

A Basket



B Plate Set



C.1 Optional Trolley



D Filter



C.2 Optional Trolley

