

A close-up photograph of a Zoncare MI5 Color Doppler Ultrasound System. The image shows the control panel with a hand pressing a button, and a blurred background of a patient lying on a table. The text 'MI5' is prominently displayed in red, with 'Color Doppler Ultrasound System' in a smaller font to its right.

# MI5

Color Doppler  
Ultrasound System

**ZONcare**  
MC   CE ISO13485

**Wuhan Zoncare Bio-medical Electronics Co.,Ltd.**

Add: Zoncare Building, No. 380, High-tech 2nd Road, Eastlake High-tech Development Zone,  
Wuhan, Hubei 430206 P. R. China.

Tel: +86-27-8777 0203 Fax: +86-27-8777 0581

Email: [info@zoncare.com](mailto:info@zoncare.com) <http://www.zoncare.com>

2021 Wuhan Zoncare Bio-Medical Electronics Co.,Ltd. All rights reserved. Specifications subject to changes  
without prior notice.

**zoncare**



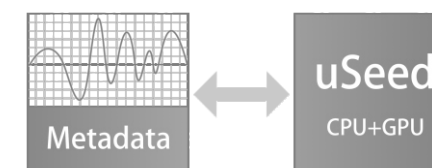


Equipped with 2nd generation platform-uSeed, **M5** provides premium quality and user experience. It could be your first choice.

## Technologies

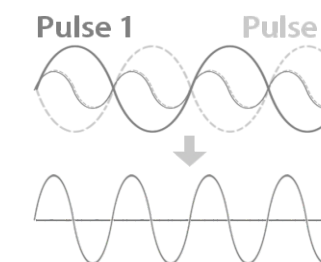
### uSeed Platform

M5 facilitates accurate diagnosis based on uSeed metadata beamforming imaging technology platform. This brand-new platform is developed by CPU + GPU heterogeneous computing technology. The images in uSeed platform are saved as metadata for postprocessing.



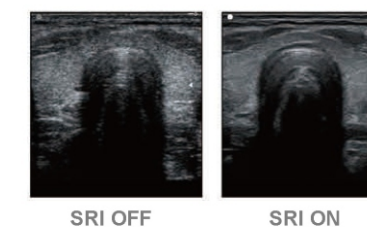
### Pulse Inverse Harmonic Imaging PIHI

PIHI reduces the distortion generated by the fundamental wave, and greatly improve the signal-to-noise ratio.



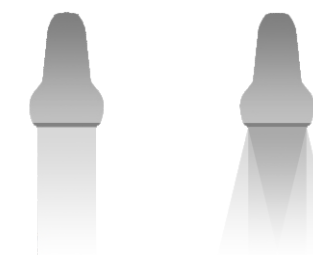
### Speckle Reduction Imaging

SRI technology significantly reduces the unwanted speckle, provides enhanced tissue boundary and tissue echo for confident clinical diagnosis.



### Spatial Compound Imaging

SCI provides better contrast resolution, reduces the speckle noise and smoothes the imaging of homogeneous tissue.





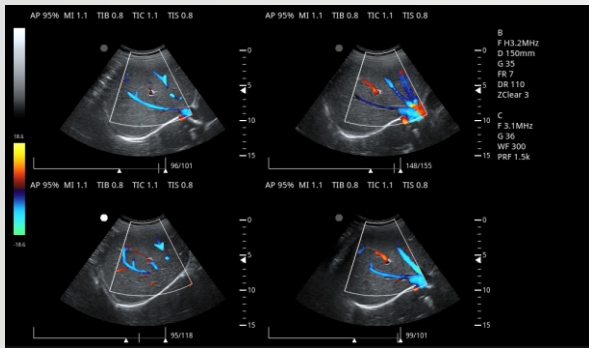


## ***Comprehensive clinical applications***

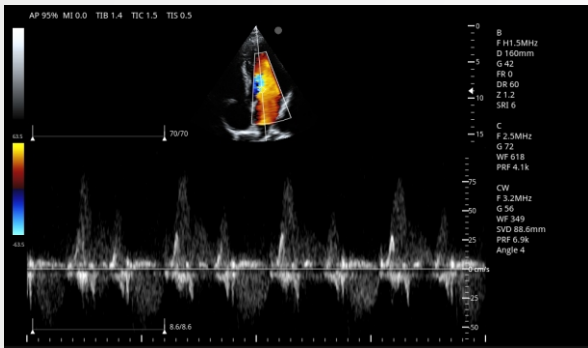
M5 provides remarkable performance in Abdomen, Gynecology, Obstetric, Cardiology, Small parts (Breast, Testes, Thyroid, etc.) , Urology, Musculoskeletal and Peripheral vascular.

A variety of imaging modes brings a comprehensive clinical application.

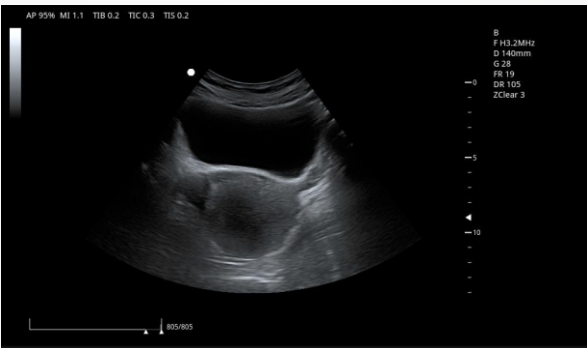
- B Steer, CW, EFOV, PDI, DPDI
- Auto IMT, TSI, THI, SRI, SCI, FCI, Biopsy function could be your first choice.



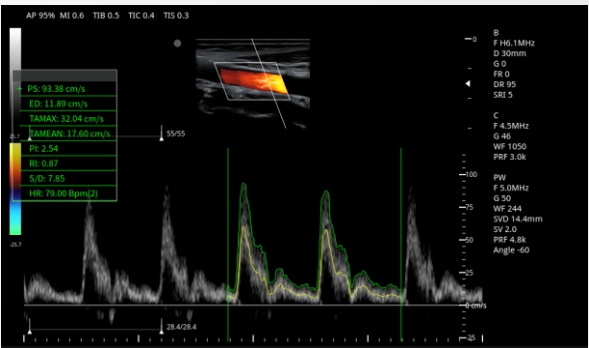
**Liver 4C mode**



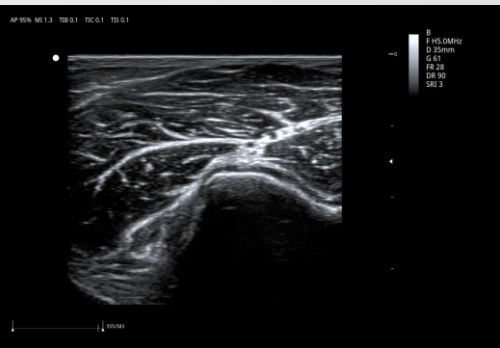
**Four-chamber CW mode**



**Bladder & Uterus**



**CCA PW Auto trace**



**Elbow Join**



**M5** is a brilliant choice for those who require outstanding image quality, excellent portability and intelligent workflow.

## Features

- 2D, CFM, M, PW, CW, CMM, DPDI, Biopsy function
- THI, SRI, SCI, TSI, FCI, EFOV, HR flow, B-steer
- Standard Auto IMT measurement
- Support local and global amplification
- Support PW auto trace and auto calculation
- Preposed USB ports, supporting multi-data transmission
- Dual Live and Multi-synchronization technologies
- Q Save – parameter saving/presetting
- DICOM 3.0

## Ergonomic Design



Light-weight 7.5kg

12" Medical LCD Monitor with  
90 degrees rotation

2 Activated Probe Connectors

2 Probe Holders

Backlit Keyboard

2 Preposed USB Ports

Built-in Battery (Optional)

Customized Trolley (Optional)

