

Transducers

C5-2Q



2 - 5 MHz
Curved Array

C5-1Q



1 - 5 MHz
Single Crystal
Curved Array

MC8-4Q



4 - 8 MHz
Micro - Convex Array

MC9-3TQ



3 - 9 MHz
Micro - convex Array

L12-5HQ



5 - 12 MHz
Linear Array

L12-5Q



5 - 12 MHz
Linear Array

L17-7HQ



7 - 17 MHz
High Frequency
Linear Array

L17-7SQ



7 - 17 MHz
High Frequency Compact
Linear Array

E10-3BQ



3 - 10 MHz
Endocavity
Curved Array (200°)

E10-3HQ



3 - 10 MHz
Endocavity
Curved Array (200°)

P5-1Q



1 - 5 MHz
Phased Array

P7-3Q



3 - 7 MHz
Pediatric Phased Array

Lighten Your Vision Within a Touch

Acclarix™ AX2
Diagnostic Ultrasound System



Global Headquarters:

Edan Instruments, Inc. | 15 Jinhui Road, Pingshan District, Shenzhen
518122 P.R. China | +86.755.26898326 | www.edan.com | info@edan.com

U.S. and Canada inquiries:

EDAN Diagnostics, Inc. | 9918 Via Pasar, San Diego, CA 92126
+1.858.750.3066 | www.edandiagnostics.com | edan-info@edandiagnostics.com

© Edan Instruments, Inc. All rights reserved. Features and specifications are subject to change without prior notice.
No reproduction, copy or transmission may be made without written permission. Not all products or features are available in
all countries, contact Edan for local availability.

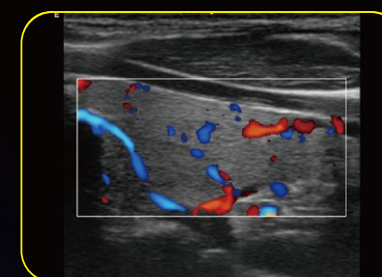
ENG-US-AX2-V1.0-20220217



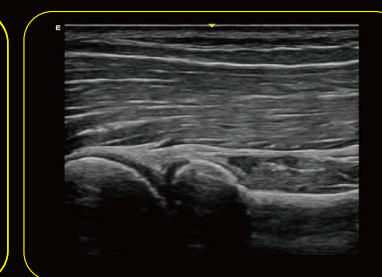
Stunning Clarity

Compacted with innovative Edan TAI technology and multiple imaging processing technologies, Acclarix AX2 could perfectly display ultrasound image in different modes, assisting sonographer to make more precise diagnosis.

- High fidelity, high-channel count architecture results in superb detail resolution, particularly at depth
- Tissue Adaptive Imaging (TAI) continuously and automatically optimizes imaging allowing more focus on the patient
 - In B-mode, TAI fine tunes multiple parameters to provide the best possible image quality
 - In Doppler, TAI automatically adjusts for flow state providing improved continuity, border detection and fill-in



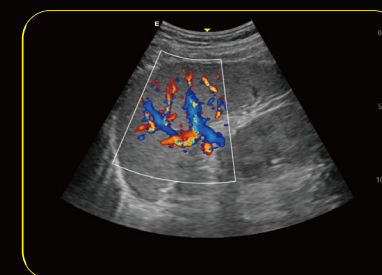
Thyroid



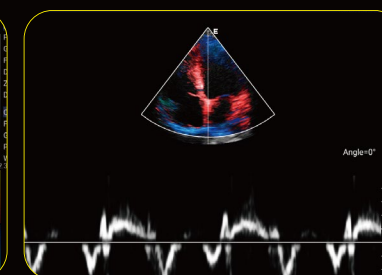
MSK



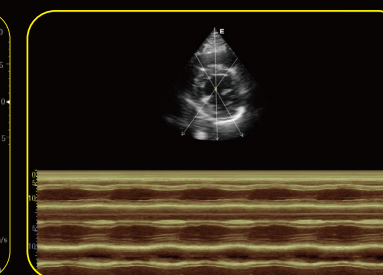
Fetal Heart



Color Doppler Spleen



TVD



Anatomic M

The Masterpiece for POC

Compact with a 4.5kg lightweight magnesium alloy body, the remarkable Acclarix AX2 Compact Ultrasound System delivers a surprising combination of features to meet the demands of point-of-care imaging. The Acclarix AX2 has been design from the relentless focus on delivering uncompromising performance at a cost-effect price to each sonographer.

The Virtue of Value

Born of a vision to deliver meaningful design innovations that benefit the user, the Acclarix AX2 features a host of design breakthroughs that make day-to-day operation in point-of-care environments easy, fast and intuitive. The result is an elegant simplicity where form and function meet at the tips of your fingers. The Acclarix AX2 delivers unmatched value and performance across a broad range of applications.

- | | | | |
|------------|---------------------|---------------|----------|
| • Abdomen | • Cardiac Screening | • Small Parts | • OB/GYN |
| • Vascular | • MSK | • Nerve | • Breast |

Distinctive Design



Ultimate lightweight experience with magnesium alloy body



Unique dual-batteries design support ultra-long continuous scanning more than two hours



Ergonomics trolley system with semi-automatic lifting



Customizable touch screen to personalize your user interface